



JCM wireless load shackle with ALRS2 handset



Designed for accurate real-time load monitoring in harsh industrial conditions

Robust anti-rotation

Internal antenna

Full wireless operation



Features of the JCM wireless load shackle:

Robust anti-rotation

Load bobbin

Internal antenna

Extended battery life

Long-range wireless telemetry

Capacities from 6.5 to 1000 Tonne

Traceable calibration

Why JCM wireless shackles?

Developed for harsh environments with limited headroom

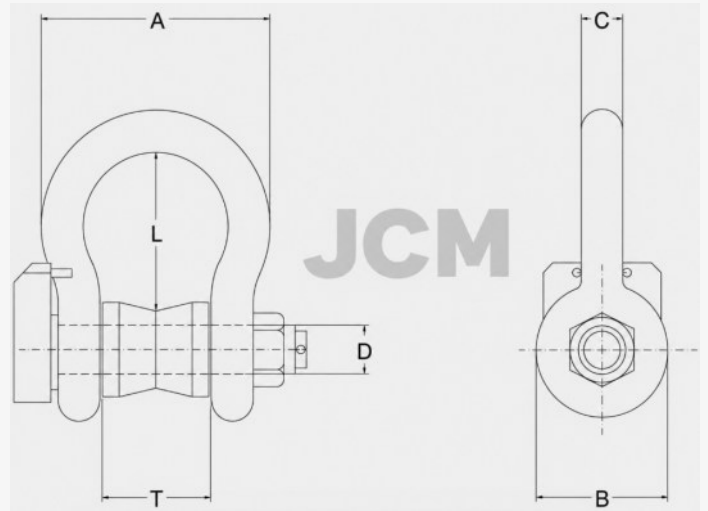
Anti-rotation and load bobbins designed for the shackle bow and pin

Optimized for maximum accuracy and repeatability



JCM wireless load shackles

| Capacity (Te) | A | B | C | D | L | T |
|------------------|-----|-----|-----|-----|-----|-----|
| 6.5 | 102 | 52 | 22 | 25 | 84 | 36 |
| 12.5 | 147 | 72 | 32 | 35 | 119 | 51 |
| 25 | 216 | 103 | 45 | 50 | 146 | 74 |
| 35 | 238 | 111 | 50 | 57 | 187 | 83 |
| 55 | 310 | 145 | 65 | 70 | 267 | 105 |
| 85 | 340 | 162 | 75 | 83 | 260 | 127 |
| 120 | 428 | 208 | 95 | 95 | 350 | 147 |
| 150 | 485 | 238 | 105 | 108 | 370 | 169 |
| 200 | 530 | 279 | 120 | 130 | 470 | 179 |
| 250 | 565 | 299 | 130 | 140 | 508 | 205 |
| 300 | 585 | 325 | 140 | 150 | 570 | 205 |
| 500 | 710 | 298 | 180 | 185 | 636 | 256 |
| 700 | 810 | 435 | 205 | 217 | 600 | 310 |



All dimensions in mm
Please confirm any critical dimension before ordering

Certification

All JCM Load links are accompanied by the following certification package as standard:

Calibration Certificate

Certificate of Incorporation

CE Certificate of Conformity

User Instructions

Calibration instructions available on request



6.5 & 13.5 Tonne load shackles are supplied in an IP68 transit case

25 tonne and above supplied in a hinged wooden transit crate manufactured from heat-treated timber for international shipping

We are able to supply direct from our factory or via our growing list of sales partners worldwide

[Request Technical Specifications](#)

[Book a Product Demonstration](#)

[Worldwide Support Available](#)