



JCM Load Monitoring
'Let us take the load'

www.jcmload.com

+44(0)1224 870765

sales@jcmload.com

Wireless load shackles

This latest product offering from JCM Load Monitoring has been developed from the experience built up over many years in remote load monitoring and it is ideally suited for harsh environments. The long battery life on standard batteries eliminates the need for chargers, improving reliability and ease of use.



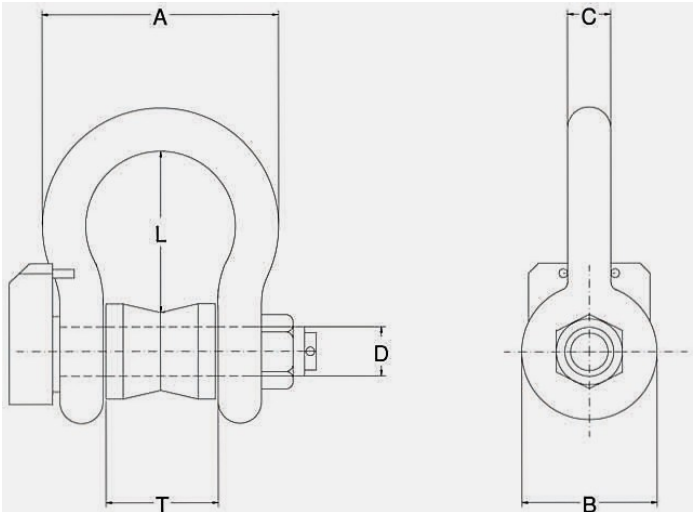
Features of our wireless load shackle are:

- Robust anti-rotation
- Load bobbin
- Internal antenna
- Industry leading battery life
- Industry leading wireless range
- No cables
- Excellent accuracy/repeatability
- Capacities 6.5 to 1000 Tonne
- Traceable calibration



Wireless load shackles

Capacity (Te)	A	B	C	D	L	T
6.5	100	54	22	25.4	84	38
12	146	76	32	35	119	50
25	171	106	45	50	146	73
35	197	127	51	57	187	83
55	311	142	68	70	267	105
85	339	159	70	73	260	105
120	416	200	89	95	350	150
150	479	230	102	108	370	170
200	530	260	120	125	470	180
250	555	260	125	140	508	205
300	565	305	130	150	570	205
500	710	370	180	185	636	255



Standard load ranges	6.5, 12.5, 25, 50, 85, 120, 200, 300, 400, 500 Tonne
Full load output	1.5 nominal mV/V
Excitation voltage (recommended) dc or ac	10 V
Excitation voltage (maximum) dc or ac	15 V
Safe service load	150 %
Proof load	200 %
Non linearity	<1.0 %
Repeatability	<0.25 %
Output at zero load	<+/-2.0 %
Input resistance	390+/-20 Ohms
Output resistance	350+/-5 Ohms
Operational temperature range	-20 to +80 deg C
Compensated temperature range	-10 to +50 deg C
Temperature coefficient of zero	+/-0.010 %/deg C
Temperature of coefficient of span	+/-0.010 %/deg C
Environmental protection	IP67
Insulation	>2 at 100 V dc G Ohms
All percentages related to full rated load	
Any critical dimension to be confirmed before ordering	

Below are a couple of pictures from our recent range test, where the ALRS2 range surpassed 600 metres.

